

2.2.6 Pulsar Multichannel and Triggered USB Interfaces

Convert your laptop or desktop PC into a multichannel power/energy meter

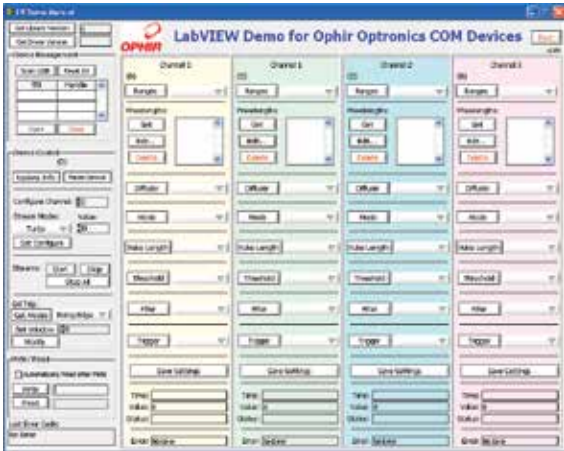
- From sensor to interface to PC
- 1, 2 and 4 channel models
- Plug and play with most Ophir sensors
- Record every energy pulse at up to 25kHz
- Measure missing pulses & trigger output with external trigger
- Log power and energy, average, statistics, histograms and more with included StarLab application
- LabVIEW VIs and COM Object Interface included



Smart Sensor to Pulsar to PC

Ophir's 1-4 channel Pulsar interface turns your PC or laptop into a full-fledged Ophir multi-channel laser power/energy meter. Just install the software, plug the sensor into the

Pulsar and the USB cable from the Pulsar to the PC USB port. With the Pulsar series, you can connect up to 4 sensors to each module, monitor each pulse at up to 25kHz and utilize external trigger.



LabVIEW



Pulsar-4 operating with StarLab software

Specifications

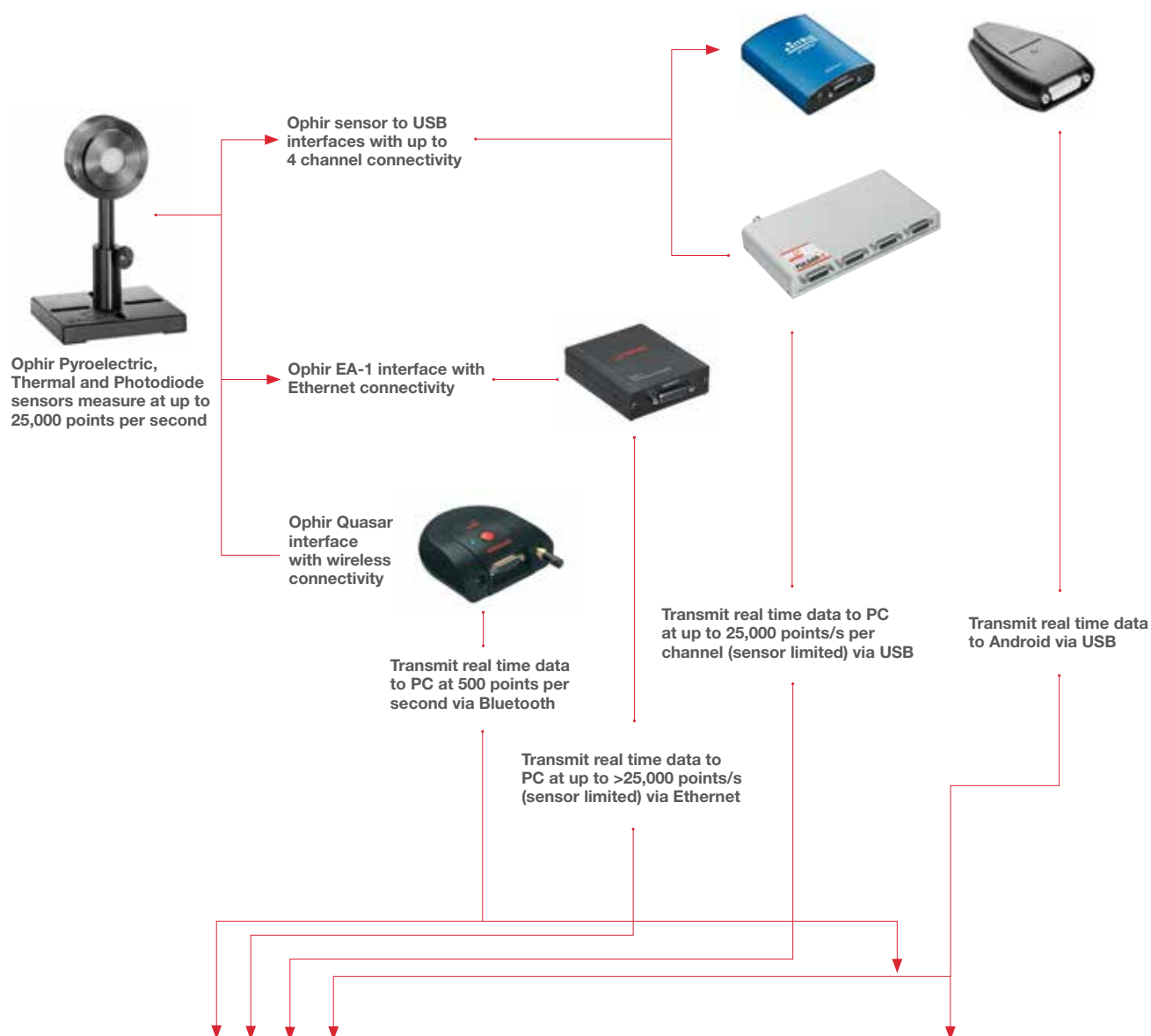
Power Measurement	
Power log period	1s to Unlimited
Energy Measurement	
Max logging rate	25,000Hz ^(a)
Trigger input and output	BNC trigger input to enable measurement of missing pulses or to select specific pulses. Can also be configured to give trigger output
Timing	Supports time stamp for each pulse - resolution 1µs
General	
Number of sensors supported	4 / 2 / 1 sensors per unit. Can combine several units with software for display of up to 8 sensors on one PC
Compatible sensors	Supports all standard Ophir Pyroelectric, Thermal ^(b) and Photodiode ^(c) sensors
Power supply	12V wall cube power supply plugs into jack on rear. The power supply can be ordered from your local distributor.
Dimensions	103mm L x 190mm W x 33mm H
Compliance	CE, UKCA, China RoHS
Notes:	(a) Limited by the maximum repetition rate of the sensor. (b) When operating with Beam Track sensors, measures Power & Energy only. (c) Not including BC20, PD300-CIE and PD300RM sensors.

Ordering Information

Item	Description	Ophir P/N
Pulsar-4	Module to operate up to 4 Ophir sensors from your PC USB port. Comes with software. Max repetition rate for every pulse 25kHz. Has external trigger capability. Powered from wall cube power supply (can be ordered from your local distributor)	7Z01201
Pulsar-2	Same as above but for 2 channels only	7Z01202
Pulsar-1	Same as above but for 1 channel only	7Z01203
Pulsar USB cable	USB-A to B cable (1 unit supplied with Pulsar)	7E01202
N Polarity power supply/charger	Power Supply/Charger AC/DC 12V 2A N-2.1x5.5 (1 unit supplied with Pulsar)	7E05029

2.2 PC Interfaces

2.2.1 PC Connectivity Options for Power/Energy Measurement



StarLab Software (data transmitted via USB, Ethernet or Bluetooth)

StarViewer Application (data transmitted via Bluetooth and USB)



StarLab Software



StarViewer Android Application

2.2.8 Summary of Computer Options for Ophir Meters and Interfaces

Communications

With Ophir RS232, GPIB, Bluetooth, USB and Ethernet communication options you can transfer data from the sensor to the computer in real time or offline. You can also control your Ophir power meter from the computer.

- USB on Nova II, Vega, StarBright, Centauri (optional on StarLite) power meters and Juno, Juno+, Pulsar PC interfaces
- Bluetooth wireless on Quasar interface
- RS232 on LaserStar, Nova II, Vega, StarBright, Centauri and Juno-RS optional on Nova
- GPIB optional on LaserStar
- Ethernet on EA-1 interface

Ophir Power Meter and Interface Specifications

Model	Centauri	StarBright	Nova II / Vega	StarLite	LaserStar	Nova	Juno / Juno+	Juno-RS	Pulsar-1, 2 or 4	EA-1	Quasar Bluetooth
Communication method	USB / RS232	USB / RS232	USB / RS232	USB (c)	RS232 / GPIB	RS232	USB	RS232	USB	Ethernet	Bluetooth
Power Measurement											
Power log period	1s to 1000hr.	1s to 1000hr.	12s to 600hr.	N.A	12s to 600hr.	5s to 24hr.	1s to Unlimited	1s to Unlimited	1s to Unlimited	1s to Unlimited	1s to Unlimited
Max points stored onboard	Unlimited	Unlimited	Nova II 5400 Vega 27000	N.A	5400	300	N.A	N.A	N.A	N.A	N.A
Max points direct on PC	Unlimited	Unlimited	Unlimited	N.A	Unlimited	Unlimited	Unlimited	Unlimited	Unlimited	Unlimited	Unlimited
Analog output	1V, 2V, 5V, 10V F.S.	1V, 2V, 5V, 10V F.S.	1V, 2V, 5V, 10V F.S.	1V F.S.	1V F.S.	1V F.S.	N.A / 1V, 2V, 5V, 10V F.S.	1V, 2V, 5V, 10V	N.A	N.A	N.A
Energy Measurement											
Max logging rate	25,000Hz USB 30Hz RS232	5000Hz USB 30Hz RS232	>2000Hz USB ^(a) >30Hz RS232	20Hz (c)	>30Hz RS232 >1500Hz GPIB ^(a)	>10Hz	10,000Hz (a)	500Hz (a)	25,000Hz (a)	>25,000Hz (a)	500Hz
Max onboard data logging rate	25,000Hz	5000Hz	4000Hz (a)	N.A	>1500Hz (a)	>10Hz	N.A	N.A	N.A	N.A	N.A
Max points stored USB/onboard	Unlimited	Unlimited	Nova II 59,400 Vega 250,000	N.A	59,400	1000	N.A	N.A	N.A	N.A	N.A
Trigger input and output	Trigger input to synchronize measurement of pulses	N.A	N.A	N.A	N.A	N.A	N.A	N.A	BNC trigger input to enable measurement of missing pulses. Can also be configured to give trigger output	N.A	N.A
Timing - time stamp for each pulse	resolution 1µs	resolution 1µs	N.A	N.A	N.A	N.A	resolution 1µs	resolution 1µs	resolution 1µs	resolution 1µs	resolution 10ms
General											
Com Object	yes	yes	yes	yes (c)	no	no	yes	no	yes	yes	no
LabVIEW VIs	yes	yes	yes	yes (c)	yes	yes	yes	no	yes	no	no
Maximum baud rate	115200	115200	38400	N.A	38400	19200 (b)	N.A.	115200	N.A.	N.A.	N.A.
PC file format	Text files, spreadsheet compatible ASCII										
TTL Out	yes	N.A	N.A	N.A	N.A	N.A	N.A	N.A	N.A	N.A	N.A
Number of sensors supported	2 / 1 sensors per unit. Can combine several units with software for display of up to 8 sensors on one PC	One sensor per unit. Can combine several units with software for display of up to 8 sensors on one PC	One sensor per unit. Can combine several units with software for display of up to 8 sensors on one PC	One sensor per unit. Can combine several units with software for display of up to 8 sensors on one PC	One sensor per unit. Can combine several units with software for display of up to 8 sensors on one PC	One sensor per unit. Two sensors per unit for dual channel mode	One sensor per unit. Can combine several units with software for display of up to 8 sensors on one PC	One sensor per unit	4 / 2 / 1 sensors per unit. Can combine several units with software for display of up to 8 sensors on one PC	One sensor per unit. Can combine several units with software for display of up to 8 sensors on one PC	One sensor per unit. Can combine several units with software for display of up to 7 Quasars on one PC
Compatible sensors	Supports most Ophir pyroelectric, thermal and photodiode sensors										
Power supply	Powered from internal rechargeable battery power supply	Powered from internal rechargeable battery power supply	Powered from internal rechargeable battery power supply	Powered from internal rechargeable battery power supply	Powered from internal rechargeable battery power supply	Powered from internal rechargeable battery power supply	Powered from USB	12V wall cube plugs into jack on rear	12V wall cube plugs into jack on rear	12V wall cube plugs into jack or PoE	Powered from internal rechargeable battery power supply
Dimensions	47 x 200 x 130mm	212 x 114 x 40mm	208 x 110 x 43mm / 210 x 109 x 36mm	211 x 114 x 40mm	194 x 228 x 57mm	205 x 95 x 39mm	77 x 55 x 23mm / 105 x 80 x 29mm	114 x 80 x 29mm	103 x 190 x 33mm	93 x 73 x 29mm	94 x 96 x 36mm

Notes: (a) The above refers to the rate for logging every single point in turbo mode. Above that rate, the instrument will sample points but not log every single point.
(b) For pyroelectric sensors, maximum guaranteed baud rate is 9600.
(c) StarLite must be USB enabled in order to work with StarLab. If your StarLite has not been USB enabled, please contact your Ophir distributor in order to obtain a USB Activation Code.

2.3 Software Solutions

2.3.1 StarLab

StarLab turns your PC into a laser power/energy multi-channel station

Extensive Graphic Display of Data

- Line Plot, Histogram, Bar chart, Simulated Analog Needle
- Multiple data sets on one graph or separate graphs on the same screen

Advanced Measurement Processing

- Power/Energy Density, Scale Factor, Normalize against a reference
- Multi-channel comparisons
- User defined mathematical equations: channels A/B, (A-B)/C etc.
- Position & size measurement with BeamTrack sensors

Data Logging for Future Review

- Can be displayed graphically or saved in text format
- Easily exported to an Excel spreadsheet

Fully supports IPM, Ariel, Centauri, StarBright, StarLite, Vega, Nova II, Pulsar, Juno, Juno+, Juno-RS, Quasar and EA-1 devices with all standard Ophir sensors

Flexible Display Options with StarLab

Choose which channels to display



Setup screen



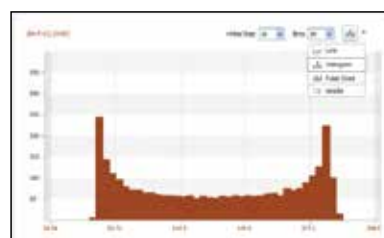
One of the above screens is maximized

You may choose to display them separately

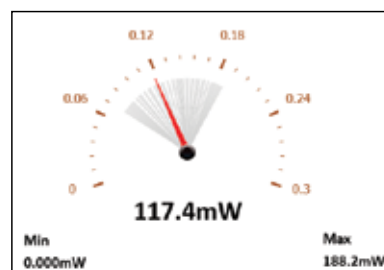
Maximize one of the sources



Choose line graph



or histogram



or needle display

Multiple Sensors displayed together

Click on one of the channels

The numerical values are from the channel chosen



Here multi line graph display has been chosen

Settings and functions may be opened to adjust then minimized as needed

Additional functions are available from the "Functions" tab



Here multi line histogram display has been chosen

Functions and Logging

Functions

- Click on f(x) to open another trace combining measured values



- Define function combining measured values

- New trace is now added per defined function

Logging

Click on log button and logging of values starts

Files are stored here. They may be viewed graphically OR numerically



```

PC Software:StarLab version 3.00 Build 19
Logged:25/05/2014 at 09:33:22
Channel 8:Veiga Thermopile 3A-P-V1 (s/n:999999) VG2.31 (s/n:657028)
Channel 9:Veiga Photodiode PD300 (s/n:694646) JKL.24 (s/n:606180)
Math M:(A-B)/A2

Channel 8:Statistics
Min:3.440mw
Max:12.22mw
Average:7.882mw
Std.Dev.:3.078mw
Overrange:0

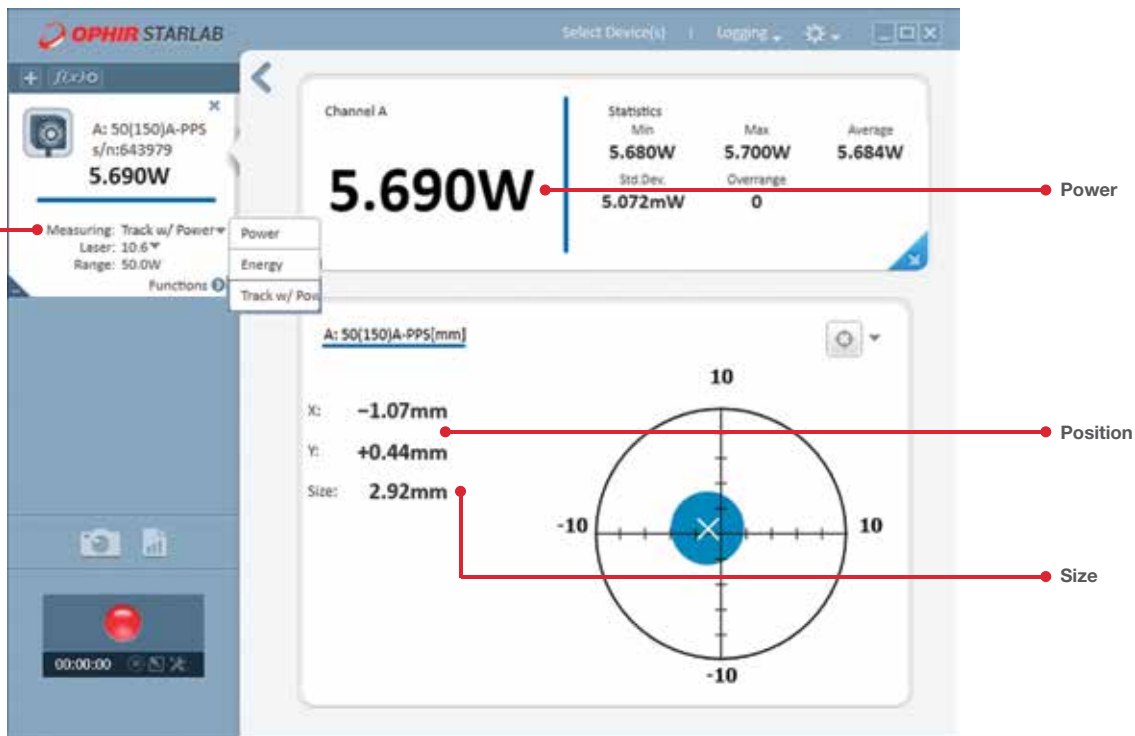
First Pulse Arrived : 25/05/2014 at 09:33:22.562000

```

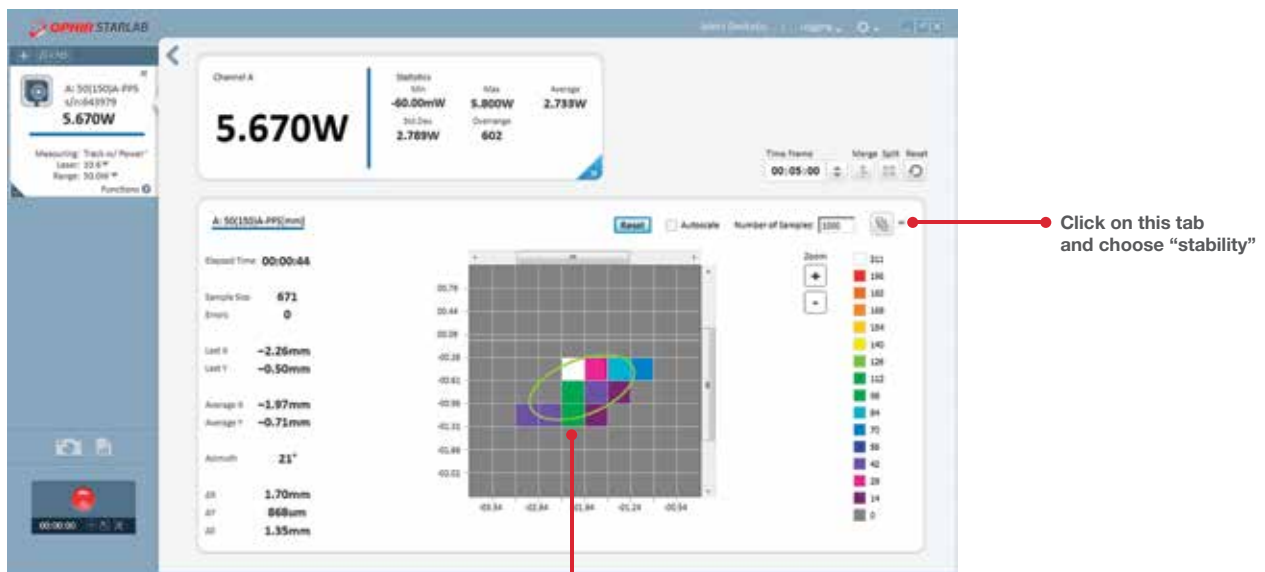
Timestamp	Channel 8	F(B)	Channel A	Math M
0.000	1.762e-002	6.620e-003		
0.064	1.836e-002	7.360e-003		
0.128	1.911e-002	8.110e-003		
0.192			1.067e-002	6.554e-006
0.193	1.989e-002	8.860e-003		
0.203			8.480e-003	1.444e-007
0.256	2.057e-002	9.570e-003		
0.369			6.540e-003	9.811e-006
0.321	2.123e-002	1.023e-002		
0.354			4.900e-003	2.841e-005
0.384	2.182e-002	1.082e-002		
0.406			3.550e-003	5.285e-005
0.449	2.232e-002	1.132e-002		
0.865	2.291e-002	1.192e-002		
0.870			3.400e-004	1.339e-004
0.928	2.258e-002	1.158e-002		
0.936			3.600e-004	1.259e-004
0.993	2.216e-002	1.116e-002		
1.003			4.800e-004	1.141e-004
1.056	2.164e-002	1.064e-002		
1.070			7.600e-004	9.761e-005
1.120	2.104e-002	1.004e-002		
1.136			1.340e-003	7.569e-005
1.184	2.038e-002	9.380e-003		
1.203			2.370e-003	4.914e-005
1.664	1.558e-002	4.580e-003		

BeamTrack Power/Position/Size Screens

- Open Measuring type tab and choose Track



Power / Position / Size screen



Position stability screen

- Displays beam center wander weighted for dwell time at each position

2.3.2 System Integrator Solutions

Besides their use as stand-alone, fully featured laser power/energy meters, Ophir devices are easily incorporated into larger end-user applications. This allows system integrators to leverage Ophir's excellence in measurement capabilities with legacy analysis packages.

Communication Protocols

All Ophir devices support one or two forms of communication with the PC.

Device	USB	RS232	GPIO	Bluetooth	Ethernet
Centauri	•	•			
StarBright	•	•			
Vega	•	•			
Nova II	•	•			
*StarLite	•				
LaserStar		•	•		
Nova		•			
Juno / Juno+	•				
Juno-RS		•			
EA-1					•
Pulsar	•				
Quasar				•	

* With USB activation code

USB

Ophir provides a common interface for communication and control of all of our USB speaking devices.

OphirLMMMeasurement is a COM object that is included as part of the StarLab installation (StarLab 2.10 and higher) that allows the system integrator to take control of the Centauri, Ariel, StarBright, StarLite, Juno, Juno+, Nova II, Pulsar, USBI and Vega devices; integrating them into his in-house measurement and analysis package.

For communication via USB, device drivers and additional support software must be installed on your PC. These components are installed as part of the StarLab application's installation process.

RS232

RS232 communication is the simplest to integrate into your Customized Solutions (OEM) application. Integrated Development Environments (IDE's) such as Microsoft Visual Studio provide functions and methods for accessing the PC's com port.

The following is all that you need to get your RS232 applications up and running

- User Commands document contains an alphabetical listing and detailed description of all commands available with the Centauri, StarBright, Vega, Nova II and Juno-RS devices.
- Appendix A5 of the StarCom User Manual contains an alphabetical listing and detailed description of all commands available with the Nova and LaserStar devices.
- Appendix A4 of the StarCom User Manual gives an example of polling the Nova device for measurements. This was written in VB6.
- An appropriate RS232 assembly
- Nova RS232 Assembly (P/N 7Y78105 ^(a)) for use with the Nova device

- Nova II / Vega RS232 cable (P/N 7E01206) for use with the Nova II and Vega devices (included with the Nova II / Vega)
- LaserStar RS232 cable (P/N 7E01121, included with the LaserStar)
- StarBright / Centauri RS232 cable (P/N 7E01213, included with the StarBright and Centauri)
- Juno-RS RS232 cable (P/N 7E11216, included with the Juno-RS)

GPIO

Besides RS232, the LaserStar can also communicate via GPIO (IEEE 488.1). Using the SDK supplied by the vendor of your GPIO controller hardware, a LaserStar IEEE cable (P/N 7Y78300 ^(b)) and the StarCom User Manual, you can integrate the LaserStar into your GPIO solution.

Bluetooth

Bluetooth system integration for the Ariel and Quasar is easily accomplished, in a similar way to our RS232 devices. For more information (and a list of commands), please contact Ophir.

Ethernet

The EA-1 Ethernet Adapter device provides system integration using a Telnet connection over an Ethernet network. A list of user commands is provided, similar to the RS232 commands described above. See the EA-1 User Manual for more details, available on the website.

System Integrators will need the following components:

- OphirLMMMeasurement COM Object.pdf. lists and describes the methods and events available for configuring, controlling and uploading measurements from Ophir devices.
- OphirLMMMeasurement.dll. COM object component developed and supplied by Ophir for communication with the Centauri, StarBright, StarLite, Juno, Juno+, Nova II, Pulsar, USBI and Vega devices. The COM object is registered when the application is installed. OphirLMMMeasurement COM Object.pdf describes how to register it on another PC where the Ophir application has not been installed.
- Standard USB cable (P/N 7E01202) for use with the Pulsar device (included).
- Standard mini-B USB cable (P/N 7E01217) for use with the Juno and Juno+ devices (included).
- Nova II / Vega USB cable (P/N 7E01205) for use with the Nova II and Vega devices (included).
- StarBright / StarLite / Centauri micro-B USB cable (P/N 7E01279) for use with StarBright, StarLite and Centauri devices (included).

Ophir provides example projects of COM Object clients in VC#, VB.NET and LabVIEW. These are found in the Automation Examples subdirectory of our StarLab PC Application.

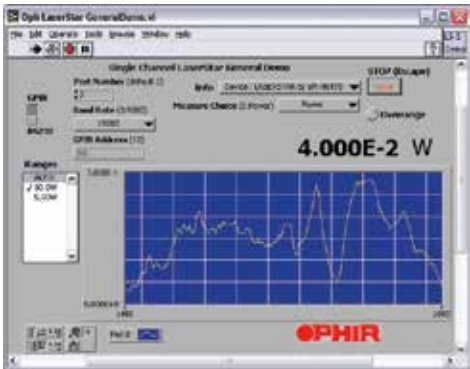
Note: (a) P/N 7Y78105 replaces P/N 78105

Note: (b) P/N 7Y78300 replaces P/N 78300

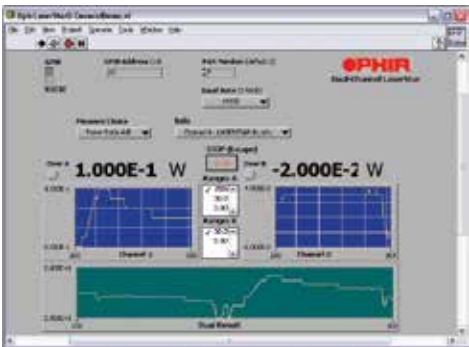
2.3.4 LabVIEW Solutions

Ophir has long recognized the growing LabVIEW community of developers. For over 10 years, we have been providing LabVIEW libraries for all of our devices. These are full open-source applications that can be used as is or tailored by the LabVIEW programmer to his specific needs. These starter applications are basic software only that allows the LabVIEW programmer to experiment freely to fully feel the strength of our devices' respective command sets. These applications contain VIs (Virtual Instruments) to

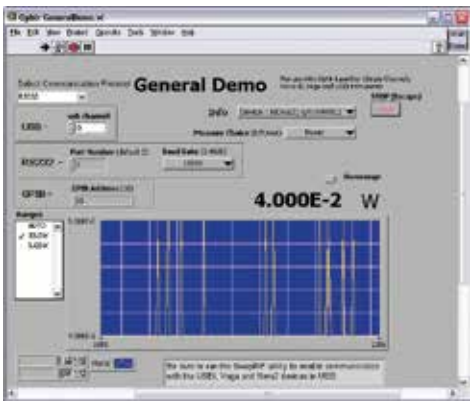
control the instrument. You can combine VIs to create successively larger and more versatile larger VIs by simply connecting them together. Users can create sophisticated, custom applications in minutes. In most cases, applications can be built and tested even before the instrument even arrives. The versatility of these tools is limitless. All of our LabVIEW libraries can be downloaded from our web site: www.ophiropt.com



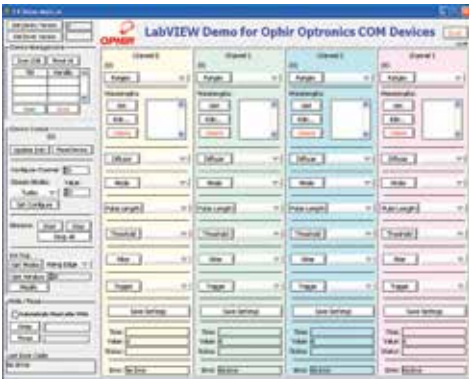
VI Libraries
Ophnova.lib
Library supplied for use with the Nova. Communication is in RS232 and is based on NI-VISA.



Ophlstrd.lib
Library supplied for use with the Dual-Channel LaserStar. Communication can be set to RS232 or GPIB and is based on NI-VISA.



OphInstr.lib
This library can be configured to work with the Nova II, Vega, or Single-Channel LaserStar devices. It can also work with the Juno or Juno+ with a Thermopile or Photodiode sensors. It can be set to RS232, USB or GPIB. It is based on NI-VISA for all 3 communication protocols.



LabVIEW COM Demo.lib
Library supplied for use with all of our USB speaking devices (Ariel, Centauri, StarBright, StarLite, Juno, Juno+, Nova II, Pulsar, Vega). Makes use of our COM object. Included with our StarLab application.