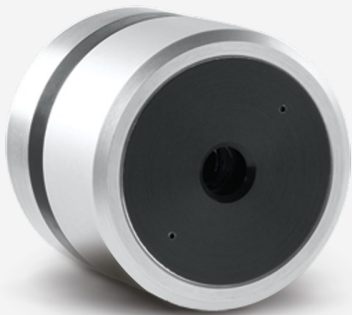




## QUAD-9-MT-E

4-quadrant laser position sensing detector for pulsed lasers.



### PRODUCT FAMILY KEY FEATURES

#### MEASURE, TRACK AND ALIGN

Follow your laser beam wherever it goes.

#### 4-CHANNEL DETECTORS

Unique quadrant detector technology senses laser beam position with high resolution.

#### FOR CW, PULSED AND HIGH REP RATE LASERS

- QUAD-E: energy per pulse from  $\mu\text{J}$  to  $\text{mJ}$
- QUAD-P: powers from  $\mu\text{W}$  to  $\text{mW}$

#### FROM UV TO FIR AND THZ

Absorbers to cover all sources, from UV to millimeter wavelengths

#### LARGE AREA SENSORS

9 mm and 20 mm square detectors

#### FAST USB 2.0 CONNECTION

Ensures full speed tracking

#### INCLUDES APPLICATION SOFTWARE

Complete LabView application software included, with many features

#### COMPATIBLE STAND

[STAND-D-233](#)



## SPECIFICATIONS

### MEASUREMENT CAPABILITIES

Spectral range	0.1 - 3000 $\mu\text{m}$
Typical rise time	150 $\mu\text{s}$
Typical power sensitivity	2000 V/W
Maximum repetition rate	1000 Hz
Minimum beam size <sup>1</sup>	4.5 mm $\varnothing$
Minimum position resolution	1 $\mu\text{m}$
Maximum measurable energy	20 mJ
Noise equivalent energy	0.5 $\mu\text{J}$
Maximum pulse width	2.5 $\mu\text{s}$

1. For optimal performance

### DAMAGE THRESHOLDS

Maximum average power density <sup>1</sup>	0.1 W/cm <sup>2</sup>
Maximum energy density <sup>2</sup>	50 mJ/cm <sup>2</sup>

1. At 1064 nm.  
2. At 1064 nm, 10 ns.

### PHYSICAL CHARACTERISTICS

Aperture width	9 mm
Aperture height	9 mm
Absorber	MT
Dimensions	63.5 $\varnothing$ X 40.6D mm
Weight	0.18 kg



---

ORDERING INFORMATION

QUAD-9-MT-E

201774

Specifications are subject to change without notice. Refer to the user manual for complete specifications.

## INTERESTED IN THIS PRODUCT?

GET A QUOTE

Find your local sales representative at [gentec-eo.com/contact-us](http://gentec-eo.com/contact-us)