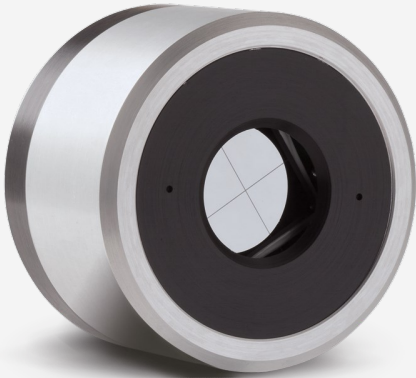




QUAD-20-MT-P
4-quadrant laser position sensing detector for CW lasers (using a chopper).



PRODUCT FAMILY KEY FEATURES

- MEASURE, TRACK AND ALIGN**
Follow your laser beam wherever it goes.
- 4-CHANNEL DETECTORS**
Unique quadrant detector technology senses laser beam position with high resolution.
- FOR CW, PULSED AND HIGH REP RATE LASERS**
 - QUAD-E: energy per pulse from μJ to mJ
 - QUAD-P: powers from μW to mW
- FROM UV TO FIR AND THZ**
Absorbers to cover all sources, from UV to millimeter wavelengths
- LARGE AREA SENSORS**
9 mm and 20 mm square detectors
- FAST USB 2.0 CONNECTION**
Ensures full speed tracking
- INCLUDES APPLICATION SOFTWARE**
Complete LabView application software included, with many features
- COMPATIBLE STAND**
[STAND-D-233](#)



SPECIFICATIONS

MEASUREMENT CAPABILITIES	
Noise equivalent power	2 μW
Spectral range	0.1 - 3000 μm
Typical rise time	0.02 s
Typical power sensitivity	2000 V/W
Minimum beam size ¹	10 mm \varnothing
Minimum position resolution	10 μm
Maximum chopping frequency	50 Hz
1. For optimal performance	
DAMAGE THRESHOLDS	
Maximum average power density ¹	0.1 W/cm ²
Maximum energy density ²	50 mJ/cm ²
1. At 1064 nm. 2. At 1064 nm, 10 ns.	
PHYSICAL CHARACTERISTICS	
Aperture width	20 mm
Aperture height	20 mm
Absorber	MT
Dimensions	63.5 \varnothing X 40.6D mm
Weight	0.18 kg
ORDERING INFORMATION	



Specifications are subject to change without notice. Refer to the user manual for complete specifications.

INTERESTED IN THIS PRODUCT?

GET A QUOTE

Find your local sales representative at gentec-eo.com/contact-us