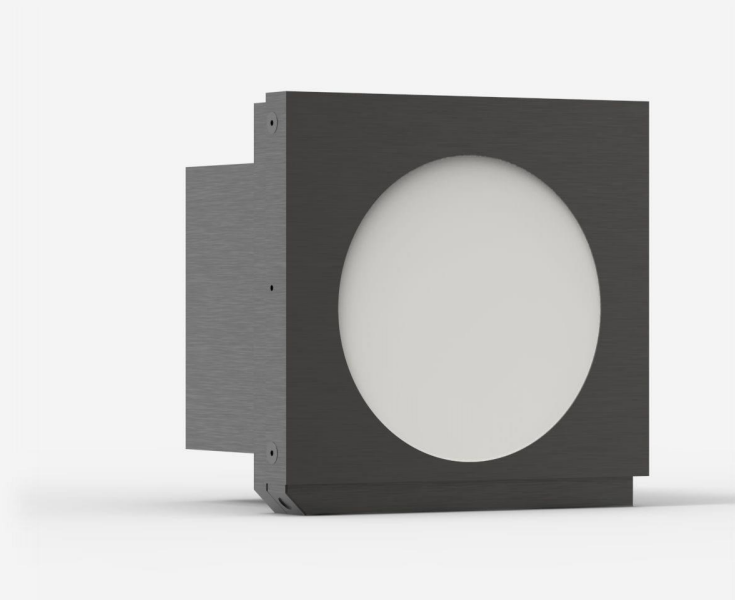




## QE95LP-H-MB-QED-D0

Pyroelectric detector for laser energy measurement up to 250 J.



### PRODUCT FAMILY KEY FEATURES

**MODULAR CONCEPT**

Increase the power capability of your detector: 2 different cooling modules

**EXTRA LARGE APERTURE**

Effective aperture of 95 mm Ø

**QED ATTENUATOR AVAILABLE**

Measure up to 5X higher energies. Available with optional calibration, all wavelengths between 532 & 1064 nm, or single wavelength. [Read more.](#)

**LOW NOISE LEVEL**

15 µJ for the MB coating

**TEST TARGET INCLUDED**

With the MB models

**SMART INTERFACE**

Containing all the calibration data

**COMPATIBLE STAND**

[STAND-D-443](#)



## SPECIFICATIONS

### MEASUREMENT CAPABILITIES

Spectral range <sup>1</sup>	0.3 - 2.1 µm
Typical rise time	2 ms
Repeatability	<0.5%
Maximum repetition frequency	40 Hz
Maximum measurable energy <sup>2</sup>	250 J
Noise equivalent energy <sup>3</sup>	30 µJ
Maximum pulse width	1.5 ms
Energy calibration uncertainty	±3 %

1. For the calibrated spectral range, see the user manual.
2. At 1064 nm, 150 µs, single-shot. Increasing pulse width increases maximum measurable energy.
3. Nominal value. Actual value depends on electrical noise in the measurement system.

### DAMAGE THRESHOLDS

Maximum average power density <sup>1</sup>	600 W/cm²
Maximum energy density <sup>2</sup>	8 J/cm²
Maximum power	90 W

1. May vary with wavelength and average power.
2. At 1064 nm, 7 ns, 10 Hz. May vary with wavelength and pulse width.

### PHYSICAL CHARACTERISTICS

Cooling	Convection (heatsink)
Aperture diameter	90 mm
Absorber	QED
Dimensions	125H x 127W x 104D mm
Weight	1.2 kg

### ORDERING INFORMATION

QE95LP-H-MB-QED-D0	202195
QE95LP-H-MB-QED-IDR-D0	203307



Specifications are subject to change without notice. Refer to the user manual for complete specifications.

## INTERESTED IN THIS PRODUCT?

GET A QUOTE

Find your local sales representative at [gentec-eo.com/contact-us](http://gentec-eo.com/contact-us)