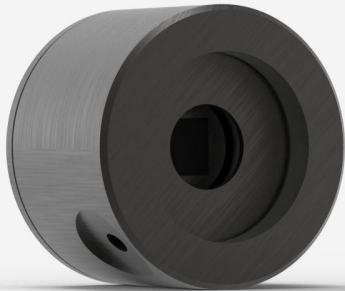




## QE8SP-B-BL-D0

Pyroelectric detector for laser energy measurement up to 2.5 mJ.



### PRODUCT FAMILY KEY FEATURES

#### VERY LOW NOISE LEVELS

Noise levels of a photo detector, but with the high energies of a pyroelectric:

- 50 nJ with the MT coating
- 100 nJ with the BL coating

#### 2 COATINGS AVAILABLE:

- BL: black coatings, sensitivity of 900 V/J, readings up to 400 Hz
- MT: metallic coating, sensitivity of 2400 V/J, readings up to 1000 Hz

#### SMART INTERFACE

Containing all the calibration data

#### COMPATIBLE STAND

[STAND-D-233](#)



## SPECIFICATIONS

### MEASUREMENT CAPABILITIES

Spectral range <sup>1</sup>	0.193 - 20 µm
Typical rise time	30 µs
Repeatability	<0.5%
Maximum repetition frequency	400 Hz
Maximum measurable energy <sup>2</sup>	2.5 mJ
Noise equivalent energy	150 nJ
Maximum pulse width	10 µs
Energy calibration uncertainty	±4.0 %

1. For the calibrated spectral range, see the user manual.  
2. With MAESTRO.

### DAMAGE THRESHOLDS

Maximum average power density <sup>1</sup>	1 W/cm²
Maximum energy density <sup>2</sup>	50 mJ/cm²
Maximum power	0.5 W

1. May vary with wavelength and average power.  
2. At 1064 nm, 7 ns, 10 Hz. May vary with wavelength and pulse width.

### PHYSICAL CHARACTERISTICS

Cooling	Convection
Aperture width	7.8 mm
Aperture height	7.8 mm
Absorber	BL
Dimensions	38.1 Ø X 27.4D mm
Weight	0.09 kg

### ORDERING INFORMATION

QE8SP-B-BL-D0	202017
---------------	--------



QE8SP-B-BL-INT-D0

202389

QE8SP-B-BL-INE-D0

QE8SP-B-BL-IDR-D0

Specifications are subject to change without notice. Refer to the user manual for complete specifications.

## INTERESTED IN THIS PRODUCT?

GET A QUOTE

Find your local sales representative at [gentec-eo.com/contact-us](http://gentec-eo.com/contact-us)