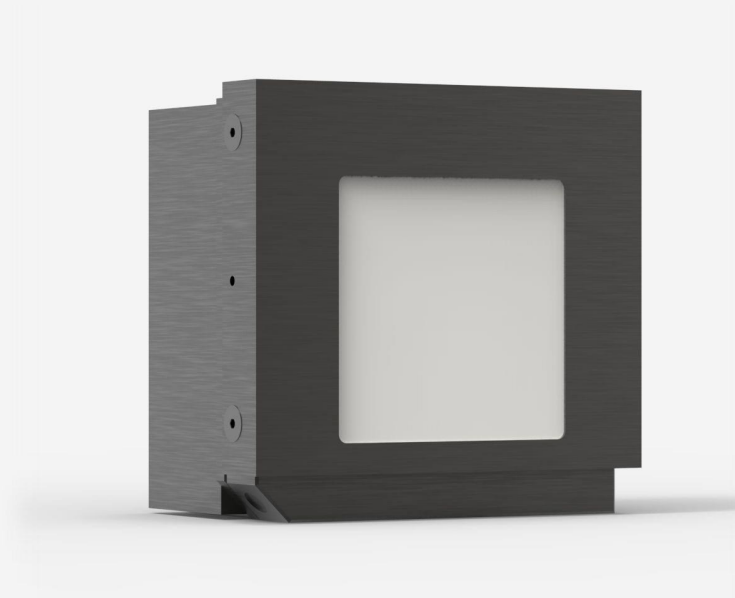




## QE50LP-H-MB-QED-D0

Pyroelectric detector for laser energy measurement up to 85 J.



### PRODUCT FAMILY KEY FEATURES

#### MODULAR CONCEPT

Increase the power capability of your detector: 2 different cooling modules

#### LOW NOISE LEVEL

10 µJ for the MB coating

#### QED ATTENUATOR AVAILABLE

Measure up to 5X higher energies. Available with optional calibration, all wavelengths between 532 & 1064 nm, or single wavelength. [Read more.](#)

#### HIGH REPETITION RATE OPTIONS

- QE-MB: 200 Hz (standard)
- QE-MB: 500 Hz (upon request)
- QE-MT: 4 000 Hz (standard)

#### TEST TARGET INCLUDED

With the MB models

#### SMART INTERFACE

Containing all the calibration data

#### COMPATIBLE STAND

[STAND-D-233](#)



## SPECIFICATIONS

### MEASUREMENT CAPABILITIES

Spectral range <sup>1</sup>	0.3 - 2.1 µm
Typical rise time	900 µs
Repeatability	<0.5%
Maximum repetition frequency	200 Hz
Maximum measurable energy <sup>2</sup>	85 J
Noise equivalent energy <sup>3</sup>	20 µJ
Maximum pulse width	675 µs
Energy calibration uncertainty	±3 %

1. For the calibrated spectral range, see the user manual.
2. At 1064 nm, 7 ns, 10 Hz. Increasing pulse width increases maximum measurable energy.
3. Nominal value. Actual value depends on electrical noise in the measurement system.

### DAMAGE THRESHOLDS

Maximum average power density <sup>1</sup>	600 W/cm²
Maximum energy density <sup>2</sup>	8 J/cm²
Maximum power	45 W

1. May vary with wavelength and average power.
2. At 1064 nm, 7 ns, 10 Hz. May vary with wavelength and pulse width.

### PHYSICAL CHARACTERISTICS

Cooling	Convection (heatsink)
Aperture width	47 mm
Aperture height	47 mm
Absorber	QED
Dimensions	78H x 80W x 49D mm



Weight

0.34 kg

ORDERING INFORMATION

QE50LP-H-MB-QED-D0	202187
QE50LP-H-MB-QED-INE-D0	
QE50LP-H-MB-QED-INT-D0	202748
QE50LP-H-MB-QED-IDR-D0	203278

Specifications are subject to change without notice. Refer to the user manual for complete specifications.

INTERESTED IN THIS PRODUCT?

GET A QUOTE

Find your local sales representative at [gentec-eo.com/contact-us](http://gentec-eo.com/contact-us)