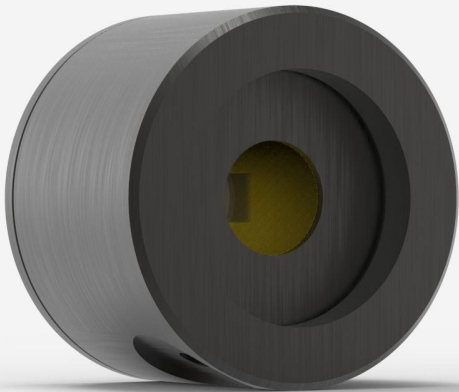




PE5B-GE-D0

Photodiode detector for laser energy measurement up to 2.4 nJ.



PRODUCT FAMILY KEY FEATURES

VERY LOW NOISE LEVEL

Take measurements with a noise level as low as 8 fJ (model PE3B-Si only) with the M-LINK, MAESTRO and S-LINK monitors.

3 SENSORS AVAILABLE

- PE-B-Si family: 3 and 10 mm Ø silicon sensors for 0.21 to 1.08 µm
- PE5B-GE: 5 mm Ø, germanium sensor for 0.8 to 1.65 µm
- PE3B-IN: 3 mm Ø, InGaAs sensor for 0.9 to 1.7 µm

SMART INTERFACE

Containing all the calibration data

COMPATIBLE STAND

[STAND-D-233](#)



SPECIFICATIONS

MEASUREMENT CAPABILITIES

Spectral range ¹	800 - 1650 nm
Typical rise time	25 µs
Maximum repetition frequency	1000 Hz
Maximum measurable energy ²	2.4 nJ
Noise equivalent energy ³	1 pJ
Maximum pulse width	10 µs
Energy calibration uncertainty	±5.0 % (800 - 1049 nm) ±3.5 % (1050 - 1559 nm) ±7.0 % (1560 - 1629 nm) ±10 % (1630 - 1650 nm)

1. This detector is NIST-traceable at the calibration wavelength of 1310 nm. Typical values are used at other wavelengths.
2. At 1310 nm. See curves for maximum power at other wavelengths.
3. Nominal value. Actual value depends on environmental electromagnetic interference and wavelength.

DAMAGE THRESHOLDS

Maximum average power density	320 mW/cm²
Maximum energy density	5 µJ/cm²
Maximum power	7.1 µW

PHYSICAL CHARACTERISTICS

Aperture diameter	5 mm
Absorber	Ge
Dimensions	38.1Ø x 27.4D mm
Weight	0.09 kg
Distance to sensor face	10.5 mm

ORDERING INFORMATION

PE5B-Ge-D0	202020
PE5B-Ge-INE-D0	
PE5B-Ge-INT-D0	202653



PE5B-Ge-IDR-D0

Specifications are subject to change without notice. Refer to the user manual for complete specifications.

INTERESTED IN THIS PRODUCT?

GET A QUOTE

Find your local sales representative at gentec-eo.com/contact-us