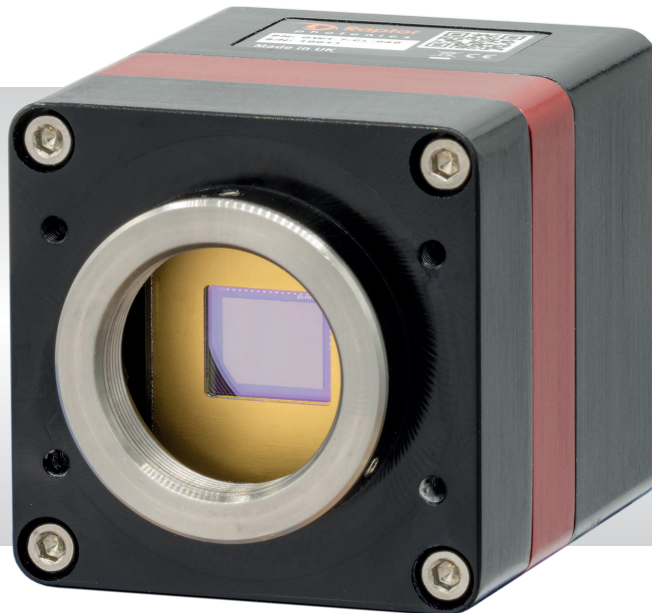




Owl 640 S

High Speed, low noise, digital SWIR camera
640 x 512 • 15µm x 15µm Pixel Pitch • Frame rate up to 30.2kHz •



Key Features and Benefits

The best performing SWIR camera in the World!

- **High Speed - up to 30.2kHz @ 32 x 4**
Perfect for high speed imaging applications
- **SWIR technology**
Enables imaging from 0.9µm to 1.7µm
- **15µm x 15µm pixel pitch**
Enables highest resolution SWIR image
- **Ultra high intrascene dynamic range**
Enables simultaneous capture of bright & dark portions of a scene
- **On-board Automated Gain Control (AGC)**
Enables clear video in all light conditions
- **Ultra compact, Low power**
Ideal for hand-held, mobile or airborne systems

Resolution	640 x 512
Frame rate	Up to 30.2kHz
Readout noise	<50e-
Wavelength Range	SWIR

Specification for Owl 640 S

Sensor Type	InGaAs PIN-Photodiode
Active Pixel	640 x 512
Pixel Pitch	15µm x 15µm
Active Area	9.6mm x 7.68mm
Spectral response ¹	0.9µm to 1.7µm
Readout Noise (RMS) on camera LG = Low Gain HG = High Gain	HG: <56e- (Typical <50e-) LG: <98e- (Typical <85e-)
Readout Noise (RMS) on ROIC	HG: <30e-
Peak Quantum Efficiency	80% @ 1.5µm
Full Well Capacity	Low Gain: >110ke-, High Gain: >35ke-
Pixel Operability	99%
Dark Current	300k e/p/s @15°C (130k typical)
Digital Output Format	12 bit Camera Link (Medium Configuration)
Exposure time ²	15µs to frame period in IWR
Shutter mode	Global shutter
Frame Rate	300Hz in full resolution. 30.2kHz with 32x4 binning
Optical Interface	C mount
Trigger interface	Trigger IN and OUT - TTL compatible
Power supply	12V DC ±0.5V
TE Cooling	Active
Image Correction	3 point NUC (offset, Gain & Dark Current) + pixel correction
Functions controlled by serial communication	Exposure, intelligent AGC, Non Uniformity Correction, TEC, frame rate
Camera Power Consumption ³	8W (TEC ON, NUC ON)
Operating Case Temperature ⁴	-20°C to +55°C
Storage Temperature	-30°C to +60°C
Dimensions (L*W*H) ⁵	74.2mm x 50.00mm x 50.00mm
Weight	260g

Raptor Photonics Limited reserves the right to change this document at any time without notice and disclaims liability for editorial, pictorial or typographical errors.

Ordering Information

Camera
Owl 640 S Digital CameraOW17-CL-640
Owl Power Supply CableRPL-HR4-K

Optional Accessories
Mini PC with XCAP STD and frame grabberRPL-PC-mf2280
Thunderbolt frame grabberRPL-mf2280
EPIX® E8 Frame GrabberRPL-EPIX-E8
EPIX® XCAP Std softwareRPL-XCAP-STD
MDR-SDR CameraLink Cable (2m)⁶RPL-MCL-CBL-2M
Optical SWIR lenses⁷RPL-xx-xxxx

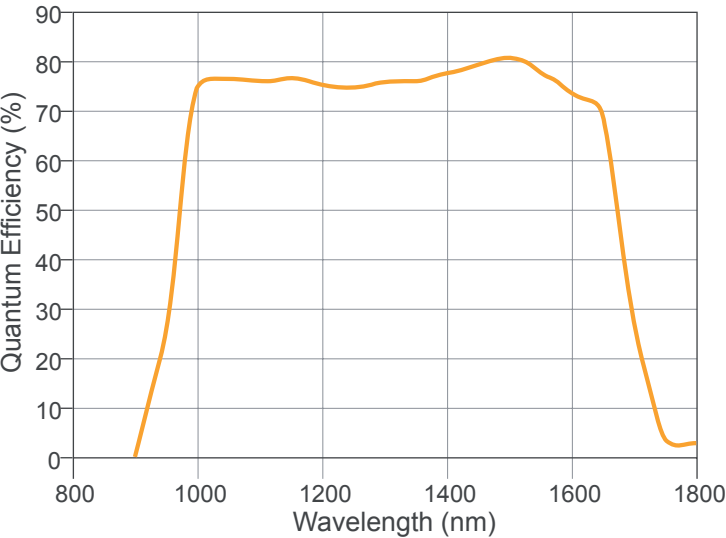
Note 1: Optional filters available.
Note 2: Maximum exposure time will be dark current limited.
Note 3: Measured in an ambient of 25°C with adequate heat sinking.
Note 4: Extended operating temperature range on request.
Note 5: Dimensions include all connector parts on the camera interface.
Note 6: Two cables required.
Note 7: Please consult us to check our range of lenses.
Note 8: The following speeds can be achieved by using ROI.

Resolution	Speed (Hz)
640 x 512	300
320 x 256	903
32 x 32	10,489
32 x 4	30,200

Demo is available on request.
Pricing AOR subject to volumes.

Detailed technical drawings
can be downloaded at
www.raptorphotonics.com

Quantum Efficiency



Applications

- Surveillance**
 - Active Imaging
 - Airborne Payload
 - Hand Held Systems
 - Imaging through Fog
 - Range Finding
 - Vision enhancement
- Scientific**
 - Astronomy
 - Beam Profiling
 - Hyperspectral Imaging
 - Semiconductor Inspection
 - Solar Cell Inspection
 - Thermography