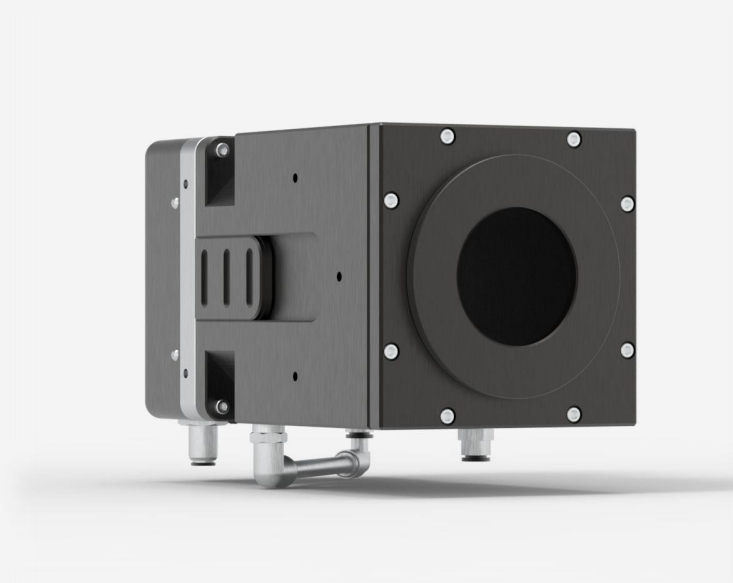




## HP125A-15KW-HD-TUBE-IMP-D0

High power detector for laser power measurement up to 15 000 W. Includes extension tube to reduce back reflections.



### PRODUCT FAMILY KEY FEATURES

#### HIGH POWER HANDLING

Handles up to 30 kW of continuous power with our standard models. Custom models are available for higher powers ([See SUPER HP](#)).

#### STABLE READING

Less sensitive to variations in water cooling temperature than any other high-power water-cooled meter on the market

#### LARGE APERTURE

Our standard HP models (4KW, 12KW, 15KW and 30KW) have a very large effective aperture of up to 280 mm to accommodate even the largest laser beams. Larger apertures with various shapes are available upon request ([See SUPER HP](#)).

#### AVAILABLE WITH YAG AND CO<sub>2</sub> CALIBRATION

All HP Models can be calibrated at YAG and CO<sub>2</sub> wavelengths with a calibration uncertainty of +/- 5%

#### DIRECT USB CONNECTION TO A PC

Each head comes with both a DB-15 connector (for use with a Gentec-EO monitor) and a USB2.0 output for direct connection to a PC.



## SPECIFICATIONS

### MEASUREMENT CAPABILITIES

Maximum average power (continuous)	15000 W
Minimum average power <sup>1</sup>	500 W
Noise equivalent power <sup>2</sup>	15 W
Spectral range	0.193 - 20 µm
Typical rise time	15 s
Power calibration uncertainty	±5 %
Repeatability	±2 %
Back reflections	2 - 4 %
Linearity with power	±2 %
Linearity vs beam diameter	±1 %
Linearity vs beam position <sup>3</sup>	±1.0 %

1. For lower powers, call your Gentec-EO representative.  
2. Nominal value. Actual value depends on electrical noise in the measurement system.  
3. For a beam size of 20% of the aperture area, moved across 80% of the aperture area.

### WATER REQUIREMENTS

Required cooling flow <sup>1</sup>	(8 - 10) LPM < ±1 LPM/min
Temperature range	15 – 25 °C
Rate of temperature change	< ±3°C/min
Maximum water pressure	413 kPa (60 psi)

1. Contact Gentec-EO for clean deionized water cooling module option.

### DAMAGE THRESHOLDS

Maximum average power density <sup>1</sup>	16 kW/cm <sup>2</sup>
--	-----------------------

1. At 1064 nm, 1.07-1.08 µm and 10.6 µm, 500 W CW. Refer to user manual for damage threshold at other powers. May vary with wavelength and average power.

### CONTROLLER AND GUI SPECIFICATIONS



Data display	Real time, scope, needle, averaging, histogram and statistics
Analog output <sup>1</sup>	0-2 Volts
Serial commands via	USB
External power supply <sup>2</sup>	Through USB or Gentec-EO displays & PC interfaces
Display type	None

1. 12 V maximum output signal available upon request.  
2. A USB power adaptor will be necessary if the HP is used with a DB-15 extension cable.

PHYSICAL CHARACTERISTICS

Cooling	Water
Aperture diameter	70 mm
Absorber	HD
Dimensions	153H x 153W x 272D mm
Weight	10 kg

ORDERING INFORMATION

HP125A-15KW-HD-TUBE-IMP-D0	205270I
----------------------------	---------

Specifications are subject to change without notice. Refer to the user manual for complete specifications.

INTERESTED IN THIS PRODUCT?

GET A QUOTE

Find your local sales representative at [gentec-eo.com/contact-us](http://gentec-eo.com/contact-us)