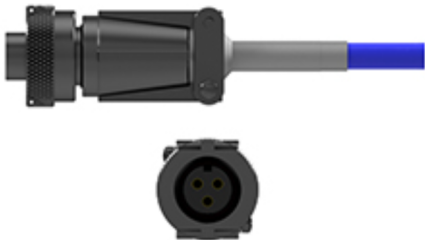


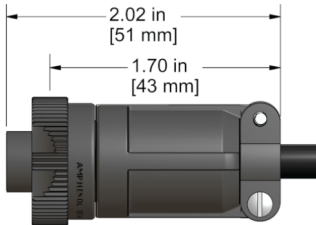
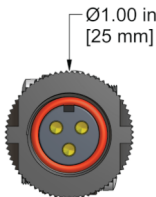
D3Q Series

3 Socket MIL-Spec Connector with Backshell, For Class I, Division 2 Locations, Permanent Mount, 250 °F (121 °C) Max Temp



Product Features

- ▶ 3 Socket Connection
- ▶ 250° F Max Temp
- ▶ IP66 Rated



Specifications

Application	Permanent Mount
Max Temperature	250° F (121°C)
Connector Type	3 Socket MIL-Spec
Rating	IP64
Pin-Out	A = Signal (+) B = Common (-) C = Signal (+)

Built to Order