



**Met One  
Instruments**

## INTRODUCING THE NEW AQ EAGLE

**FOUR SIMULTANEOUS  
PM MEASUREMENTS  
IN ONE MONITOR**



**SIMULTANEOUS  
PARTICULATE  
PROFILER SYSTEM**



**ES-405  
PARTICULATE PROFILER**

**Met One Instruments, Inc. AQ EAGLE is a system utilizing our ES-405 Particulate Profiler.** The ES-405 continuously samples ambient air and reports particulate mass concentrations simultaneously and in real time for PM<sub>10</sub>, PM<sub>4</sub>, PM<sub>2.5</sub> and PM<sub>1</sub>. Our ES-405 is ideal for fugitive emissions and neighborhood scale community monitoring projects where both simple operation, portability and modest cost of

ownership are important considerations. The AQ EAGLE system includes the CCS COMET Cloud Plus+ modem, the AIO 2 Sonic Weather Sensor, a 3-year cell data service plan, a custom web page, and two complementary annual calibrations. Data output from the AQ EAGLE is uploaded directly to the cloud and made accessible on your custom web page.



## AQ EAGLE SYSTEM

### AIO 2 SONIC WEATHER SENSOR



The AIO 2 Sonic Weather Sensor is a complete, high performance weather sensor using Met One Instruments' proven 2D sonic technology. This technology provides reference grade accuracy without moving parts and includes a built-in compass used for automatic magnetic north alignment of the wind sensor. The temperature and humidity elements are integrated into an IP65 sealed module with a quick disconnect for ease of calibration in the field.

The pressure element is precisely calibrated, and temperature compensated for outstanding performance. The AIO 2 is designed for surface meteorological applications where accuracy and reliability matter. One great benefit of our new AQ EAGLE is the system's ability to calculate the spread of a particulate cloud with wind direction and speed measurements.



## AQ EAGLE SYSTEM

### COMET CLOUD PLUS+



**REMOTE  
RELIABLE  
REAL TIME**

Met One Instruments' COMET Cloud Plus+ (CCS) includes a data modem and cloud service which is directly compatible with a variety of meteorological and air quality sensors. The CCS data modem is available for 4G LTE and GSM/GPRS (Domestic & International) connectivity.

Averaged data is reported to a secure cloud site every 15 minutes domestically and one hour internationally. Modem location is automatically available from the internal GPS. The AQ EAGLE system includes a 3-year data service plan.



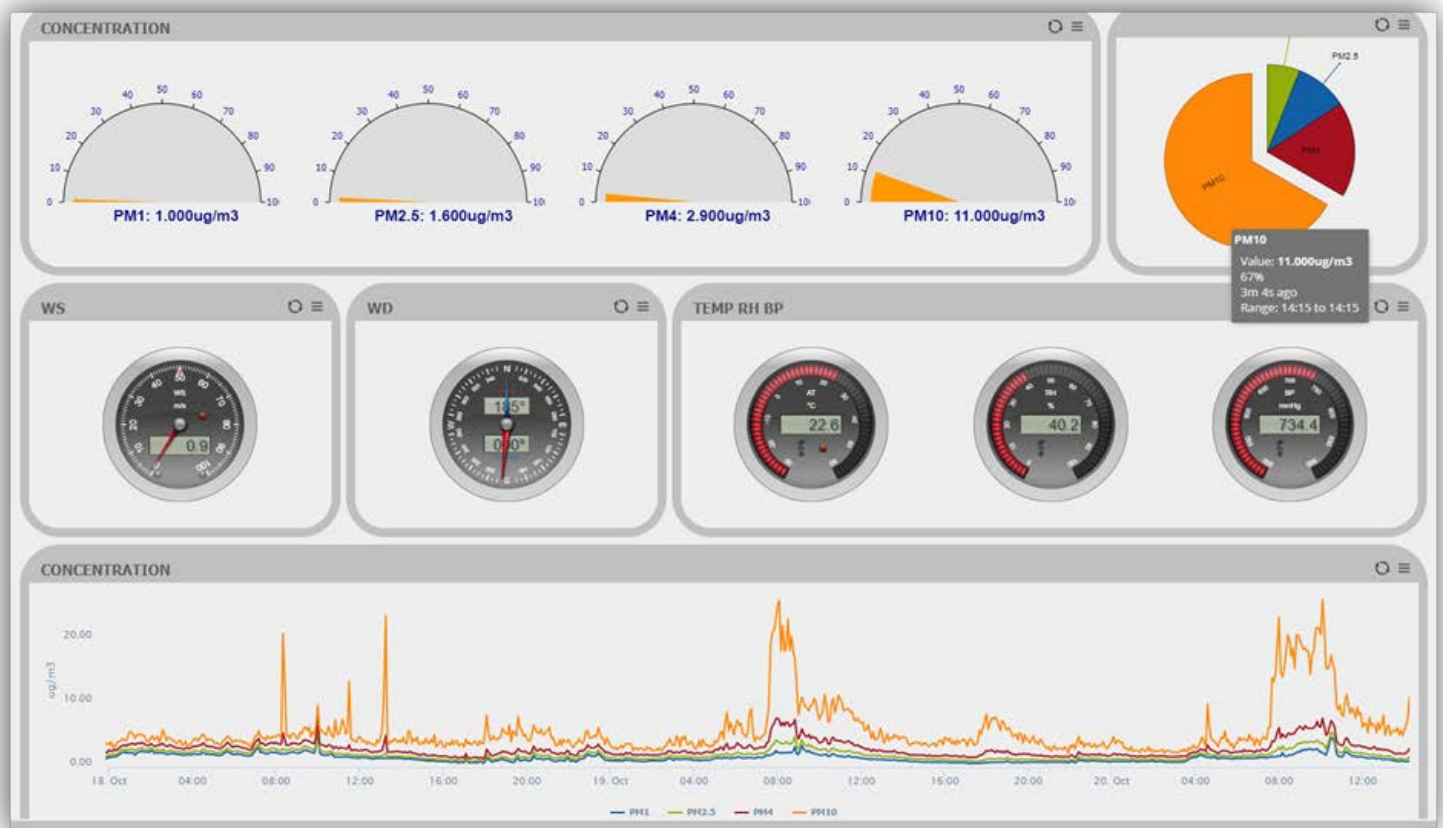
## AQ EAGLE SYSTEM

PAGE 4 OF 5

### CUSTOM WEB PAGE

The AQ EAGLE system offers personalized access to a custom, secure cloud web page, where averaged data is reported every 15 minutes domestically, and every one hour internationally.

Access your data remotely on any smartphone, laptop, or desktop computer. Additionally, Met One Instruments, Inc. now offers an opt-in feature for data sharing for crowd-sourced research initiatives!





## Met One Instruments, Inc.



### AQ EAGLE SYSTEM

PAGE 5 OF 5

## CUSTOM WEB PAGE

Easily read and interpret your data with charts and graphs detailing: PM Concentrations in PM<sub>10</sub>, PM<sub>4</sub>, PM<sub>2.5</sub> and PM<sub>1</sub>; a satellite map of where your AQ EAGLE is located; wind speed and direction;

temperature; relative humidity; barometric pressure; and historical device data. The AQ EAGLE System offers truly effortless data in your fingertips.

**CONTACT OUR SALES TEAM TODAY FOR A QUOTE:**

**[SALES@METONE.COM](mailto:SALES@METONE.COM)**

