



Solinst®

LevelSender 5

[More Info](#) | [Instructions](#) | [Get Quote](#)

Model 9500 Data Sheet



LevelSender 5 Telemetry

Model 9500



The LevelSender 5 is a simple, low cost system designed to wirelessly send data from Solinst dataloggers in the field, via cellular communication, to multiple emails and an SMS recipient. You can receive data right on your smart device.

Solinst provides the option of a pre-programmed LevelSender with 4G LTE-M SIM setup. The Solinst SIM card scans multiple networks and connects to the strongest signal. Low cost, data-only plans are billed directly through Solinst for convenience.

LevelSender 5 remote stations are compact in design, which allows them to be discreetly installed inside a 2" diameter monitoring well or other housing. Each LevelSender 5 device has a single port to connect one datalogger. An optional splitter provides connections for two dataloggers. A built-in barometer provides the option of reporting barometrically compensated Levellogger readings.

Along with water level, temperature, conductivity, barometric, or rainfall data, battery level and status updates from the remote LevelSender 5 are received with each data report.

Advantages of LevelSender 5 Telemetry

- Set high or low level alarm notifications
- Report barometrically compensated water level data
- Ready-to-go option with pre-programmed SIM card; simplified, more reliable service provider connection
- FTP (File Transfer Protocol) option for data transfer
- Low cost, compact design for discreet installation
- Extensive coverage with cellular communication
- Receive data on your smart device and PC
- Use database to import to your own list
- Remotely monitor battery level and status with each report
- Less need to travel to remote/ hazardous locations

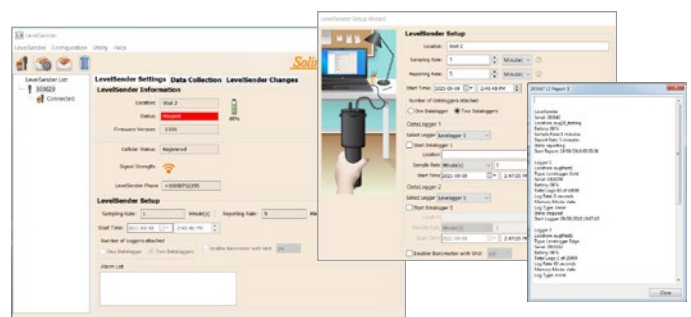


How to Use Solinst LevelSender 5

Initial setup for each LevelSender 5 device is done using the LevelSender PC Software and a USB connection. The LevelSender 5 is programmed with a sampling rate to collect data from the connected dataloggers, and a report rate to send data to the "Home Station", and email and SMS recipients.

If more detailed data is desired, the dataloggers can be programmed to record independently in their internal memory. High and low level alarms can also be set for each datalogger.

Data is sent as text to each email and SMS recipient. It is automatically saved on the Home Station PC in separate files, as well as a dynamically updated database. The database can be accessed using your own applications for posting to a website or other custom setup. Data can also be viewed in the LevelSender Software, or files can be exported for use in other programs.



Changes to the reporting schedule can be done directly through a USB cable and LevelSender Software. Alternatively, remote schedule changes can be sent to individual LevelSender 5 stations by email from the Home Station, which will update the LevelSender 5 at a next scheduled report.

® Solinst is a registered trademark of Solinst Canada Ltd.

High Quality Groundwater and Surface Water Monitoring Instrumentation

Solinst®



Solinst®

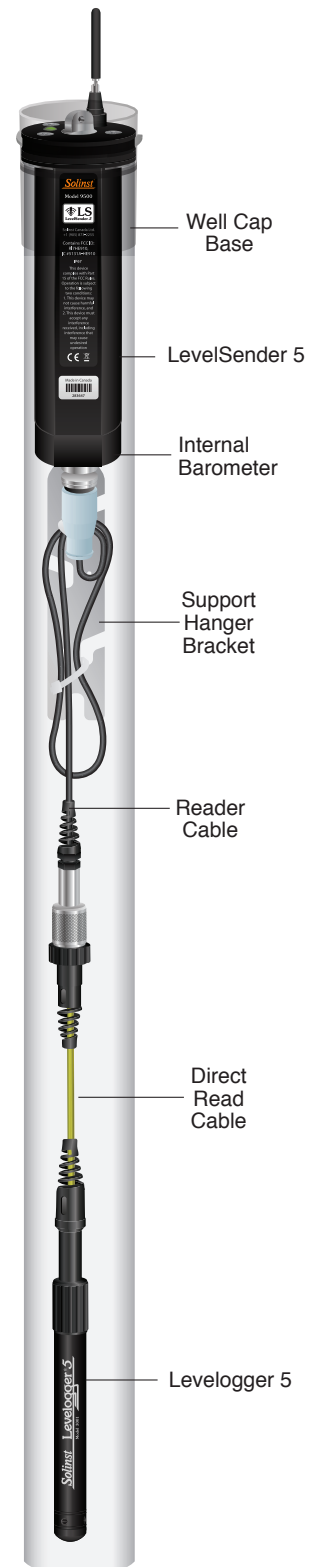
LevelSender 5

Features of the LevelSender 5

- Sized to fit inside a standard 2" well casing
- Internal barometer for automatic water level compensation
- Connection for up to two dataloggers on each device
- Remote data sent via email, SMS messaging or FTP
- Database is automatically updated with each new data report
- Free LevelSender Software for full user control and data management
- Easy programming of independent datalogger recording
- Issue remote diagnostic commands via email from the Home Station

LevelSender 5 Specifications

Modem:	4G LTE UE Category M1 device: B1 (2100MHz), B2 (1900MHz), B3 (1800MHz), B4 (AWS 1700MHz), B5 (850MHz), B8 (900MHz), B12 (700MHz), B13 (700MHz), B18 (800MHz), B19 (800MHz), B20 (800MHz), B20 (800MHz), B26 (850MHz), B28 (700MHz)
SIM Card	Standard/Mini SIM (15 mm x 25 mm); option of Solinst SIM or through service provider of client's choice
Communication:	Email, SMS, or FTP data transfer
Antenna:	SMA Male Monopole 2dBi, Higher gain antenna with max. 12dBi can be sourced elsewhere.
Data File Type:	text, .xle, .sqlite
Sampling Interval:	1 minute – 99 hours
Reporting Interval:	5 minutes – 99 hours
Schedule Programming:	Directly via USB-C connection on the LevelSender 5 or remotely via LevelSender Software (email)
Power Supply:	3 x AA 1.5V replaceable lithium batteries
Battery Life Example:	Hourly sampling and daily reporting: 433 days with 1 datalogger, 429 days with 2 dataloggers
Memory Capacity: (Between Reports)	Up to 40,000 LT logs, or 28,000 LTC logs
Operating Temperature:	-20°C – +60°C
IP Rating:	IP67
Materials:	Black Delrin®, 316 stainless steel
Size:	2.5" x 9.375" (with antenna folded down)
Weight:	16.9 oz. (478 grams)
Compatible Dataloggers:	Levellogger 5 Series dataloggers, LevelVent 5, as well as previous versions of the LevelVent and Levellogger Edge Series dataloggers
Number of Connected Dataloggers:	1, or 2 using a splitter
Barometric Compensation:	Internal barometer for automatic barometric compensation of water level data if a Barologger is not being used (not required for vented loggers)
Internal Barometer Range:	30 kPa – 120 kPa
Internal Barometer Accuracy:	±0.2 kPa (2 cm)



Single Levellogger 5 Installation